

HIGH VOLUME DRY SHIPPER

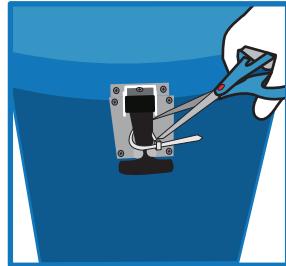
PERSONAL PROTECTIVE EQUIPMENT: CRYOGENIC GLOVES, SAFETY GOGGLES

STEP 1

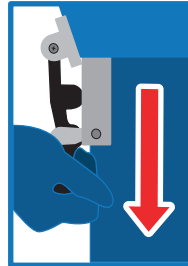
UNLATCHING INSTRUCTIONS



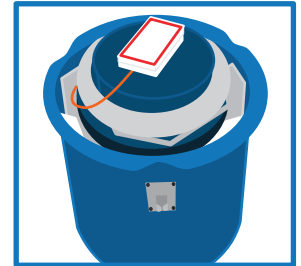
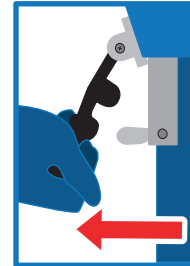
Once the shipper has arrived, remove old shipping pouch and zip-ties.



Remove zip-ties from both black handles with scissors.

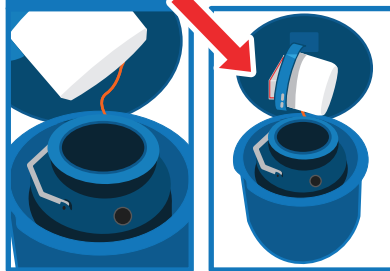


Unlatch both sides by pulling black handle down & away from the shipper.



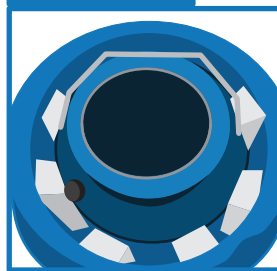
Open lid to expose the dewar.

STEP 2



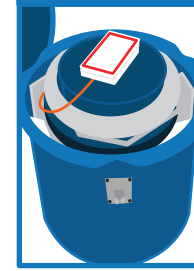
Remove the lid and rest it sideways behind the dewar and against the blue enclosure lid.

STEP 3



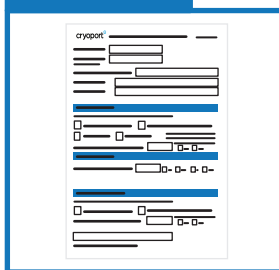
Cryoport recommends the commodity is loaded in a Safepak®XL as the bag is capable to withstand LN2. **DO NOT REMOVE THE COMMODITY AT ANY TIME.** Slowly pour Liquid Nitrogen into opening. Cryoport Customer Service will provide information on the amount of LN2 to use for your specific use case.

STEP 4



Replace the lid and let the Dry Shipper stabilize, undisturbed, for at least 30 minutes, Before handing it over to carrier.

STEP 5



Complete the In Field Recharging form and send it to cs@cryoport.com

IF THE DRY SHIPPER DOES NOT EMIT VAPOR WHEN PLUG IS REMOVED
PLEASE CONTACT CUSTOMER SERVICE IMMEDIATELY, BY CALLING (949) 470-2305 OR EMAIL CS@CRYOPORT.COM

24-hour Help Line
(949) 470-2305

Cryoport, Inc. • 17305 Daimler St. • Irvine, CA 92614
Phone: 1-949-470-2300 | Fax: 1-949-470-2306
www.cryoport.com • e-mail contact: cs@cryoport.com