

# CRYOPORT. CERTIFIED. COOL.

## 2-8°C SOLUTION

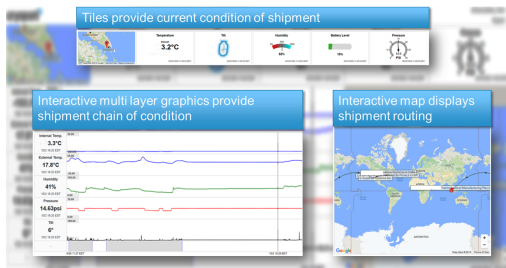
CRYOPORT. CERTIFIED. COOL.™

For valuable commodities that need to be kept at a temperature of 2-8°C, the Cryoport. Certified. Cool. C3™ Solution is the most advanced temperature controlled shipper in the life science market. The validated C3™ shipper is comprised of the Smartpak II® Condition Monitoring System, Cryoport® Logistics Management Platform and 24/7/365 real time monitoring and customer support. The industry-leading Smartpak II® and powerful Cryoport® work in conjunction to provide visibility of the location and the key aspects of your critical shipment. Cryoport's unparalleled technology and round-the-clock customer support allows for risk mitigation, proactive monitoring and intervention capabilities.

### SPECIFICATIONS:

Model Number:	C3CH2124GP
Temperature Range:	2°C - 8°C
Volume:	12 L / 729 ci
Duration:	96 hours
Tare Weight:	22 lb / 9.98 kg
Payload Size Imperial:	8.9 x 8.9 x 8.9 inches
	226 x 226 x 226 mm
Outer Dimension:	16 x 14 x 15 inches
	407 x 356 x 381 mm

***The Smartpak II® Condition Monitoring System is seamlessly integrated inside the C3™ shipper***



Smartpak II® Monitors: location, temperature, shock, orientation, pressure, humidity, anti-tamper, battery life, etc.



### KEY FEATURES:

#### Packaging

- New and recyclable outer packaging for every shipment to provide a clean and consistent appearance
- Simple pack-out with unique flap design for easy labeling identification
- Stationary temperature probe to maintain consistent location for measurement
- Phase change panels surround the payload providing greater temperature performance and overall payload protection
- C3™ shippers consist of durable components that meet ISTA 3A transit criteria

#### Informatics

- The Cryoport cold chain logistics solution, comprised of the Smartpak II® and Cryoport® provide unsurpassed analytics for planning, enroute mitigation and reporting
- Cryoport® Logistics Management Platform streamlines ordering, tracking, paperwork and communications through a single web-based portal
- Complete temperature record history available in 21 CFR Part 11 compliant database

#### Logistics

- Cryoport's unparalleled expertise in cold chain logistics solutions and our exclusive focus on medical transport
- 24/7/365 customer service support to track your shipment and mitigate risk with automated escalation
- Flexibility on freight carrier options
- Carrier optimization and route planning aimed at balancing risk and performance cost
- Cryoport provides complete chain of custody and chain of condition with every shipment

**cryoport** 

SCIENCE. LOGISTICS. CERTAINTY.

U.S. • Netherlands • Singapore  
info@cryoport.com | +1 949.232.1900 | cryoport.com

## WHY CHOOSE CRYOPORT FOR YOUR COLD CHAIN LOGISTICS



### End-to-End Solutions

From point of origin to destination, Cryoport provides easy storage, ordering, fulfillment, shipping, continuous tracking and monitoring, documentation assistance and 24/7/365 customer support for your cold chain logistics needs.



### Steadfast Protection

Navigate global cold chain logistics with Cryoport Express® liquid nitrogen dry vapor shippers, which maintain -150°C for up to 10 days. Ship your critical commodities 2-8°C with Cryoport's C3™ solution. The validated shipper maintains a temperature of 2-8°C for up to 96 hours.



### Intelligent Logistics

Integrated global storage, monitoring and shipping made simple. Monitoring and shipping temperature-sensitive materials around the world has never been easier.



### Nonstop Monitoring

Complete visibility with the Cryoport® Logistics Management Platform and Smartpak II® Condition Monitoring System. Never lose sight of your sample or shipment with round-the-clock support and access to accurate and up-to-the-minute data in a single data stream.



### Complete Compliance

No matter what you're shipping or where it's going, have confidence that your materials are being stored and shipped ethically and in full compliance with all applicable regulations. Cryoport's team of experts will guide you through customs and can manage all documentation.



### Risk Mitigation

Your choice of a logistics partner impacts your materials, your data, your operations, and most importantly, your outcome. Our solutions are built to maintain the integrity of your materials and data throughout transit with fully validated shippers and a team of experts who proactively monitor, support and find solutions for any potential challenges.

When there's no room for error,  
**TRUST CRYOPORT**

## ABOUT CRYOPORT

Cryoport is the premier provider of cold chain logistics solutions for the life sciences industry through our purpose-built proprietary packaging, information technology and specialized cold chain logistics expertise. We provide industry-leading shipping and storage logistics solutions for biologic materials, such as immunotherapies, stem cells, CAR T-cells and reproductive cells for Biopharmaceutical, Reproductive Medicine and Animal Health organizations around the world.

# cryoport

SCIENCE. LOGISTICS. CERTAINTY.

U.S. • Netherlands • Singapore  
info@cryoport.com | +1 949.232.1900 | cryoport.com