

# CRYOMAX<sup>®</sup> SHIPPER

When you need to move cryogenic commodities from one laboratory facility to another, consolidate your collection or relocate your biorepository, Cryoport is your complete logistics solution. Cryoport's CryoMax<sup>®</sup> palletized dry shipper provides large sample capacity and is easily moved with a pallet jack or forklift. The solution includes Cryoport's state-of-the-art SmartPak II<sup>®</sup> Condition Monitoring System to track and record the most important attributes of the shipment. With Cryoport's temperature-controlled logistics expertise and dedicated 24/7/365 client support team proactively monitoring your shipment, you can have peace of mind when transporting and relocating your samples.

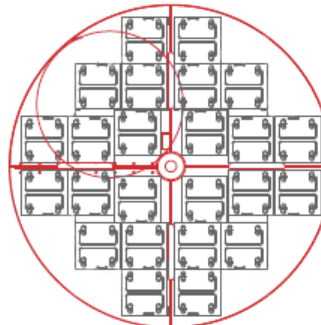


Maximum Storage Capacity	
1.2 & 2 mL vials (internally threaded)	28,800
Number of Racks – 100 cell boxes	24
Number of Stages per Rack	12
Performance	
Absorbed LN2 Capacity	133 liters
Unit Dimensions	
Neck Opening	17.5" (444 mm)
Usable Internal Height	30" (762 mm)
Inner Diameter	38.5" (978 mm)
Overall Height, with Frame	64" (1625 mm)
Liftover Height	42.1" (1070 mm)
Footprint	52" x 52" (1321 x 1321 mm)
Step Height	20.5" (521 mm)
Depth of Fold Down Step	10.8" (274 mm)
Weight Empty	1,600 lb. (726 kg)
Weight Full	2,044 lb. (927 kg)

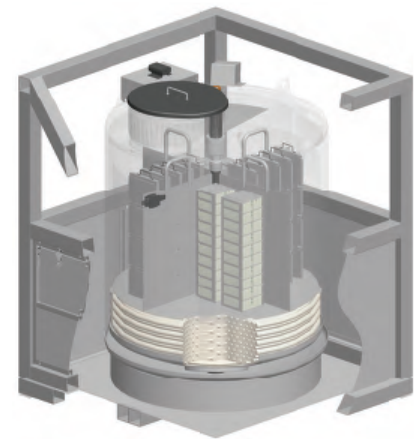
## CRYOMAX<sup>®</sup> SOLUTION FEATURES:

- Hold time up to 21 days at -150°C or colder
- Inventory tray locks to prevent rotation during transit
- Easily moved with pallet jack or forklift
- Complies with Special Provision A152
- Includes the SmartPak II<sup>®</sup> Condition Monitoring System
- Dedicated 24/7/365 client support team proactively monitors your shipment
- Intervention capabilities that mitigate risks when they occur
- CryoMax<sup>®</sup> also functions as a temperature storage unit to optimize your supply chain and relocate your inventory

Standard Rack Layout Example



Quantity	Bays High	Box Size
24	12	5" x 5" x 2"
Total 28,800 vials		



# cryoport<sup>®</sup>

SCIENCE. LOGISTICS. CERTAINTY.