

Advanced Therapy Shipper™ Product Line

# A PATIENT IS WAITING

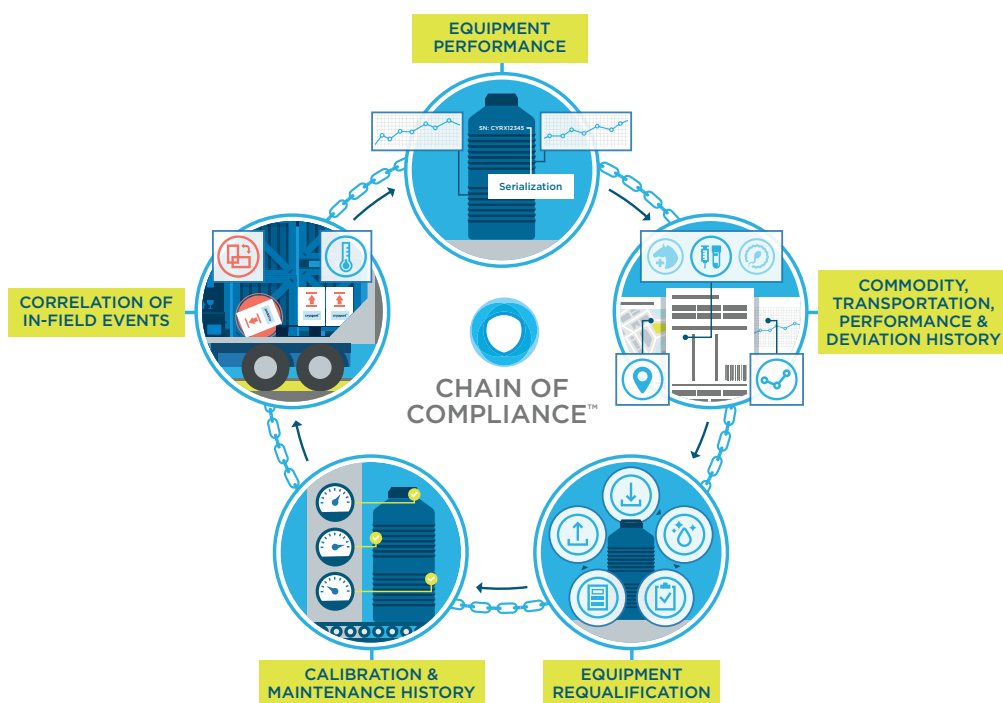
Setting the Standard: The first shipper certified  
for the delivery of advanced therapies

Cryoport's new Advanced Therapy Shipper™ (ATS) product line, a first-of-its-kind fleet, contains shippers dedicated exclusively to cell and gene supply chain management for both clinical and commercial therapies. We not only guarantee your shipper has never contained non-human-based materials, we provide certification of conformance as well as unmatched traceability so you can have confidence that your irreplaceable samples will arrive intact and in line with even the newest regulatory guidance.

## SAFEGUARD YOUR SENSITIVE SHIPMENTS WITH OUR CHAIN OF COMPLIANCE™ SOLUTION

Cryoport's Chain of Compliance™ solution effectively manages the risks associated with shipping fragile, irreplaceable regenerative medicine therapies. Our processes provide full traceability and storage of critical data regarding your ATS shipper and the transportation of your patient samples. This includes equipment performance, commodity history, equipment requalification, calibration history, and correlation of in-field events.

Our system uses near real-time data to alert you to problems before they become costly failures. Having the ability to assess risk and intervene when unexpected problems arise in transit can not only save you time and money, it can save patient lives.



When you need confidence your patients' critical therapies are being transported safely in contaminant-free equipment,

## TRUST CRYOPORT

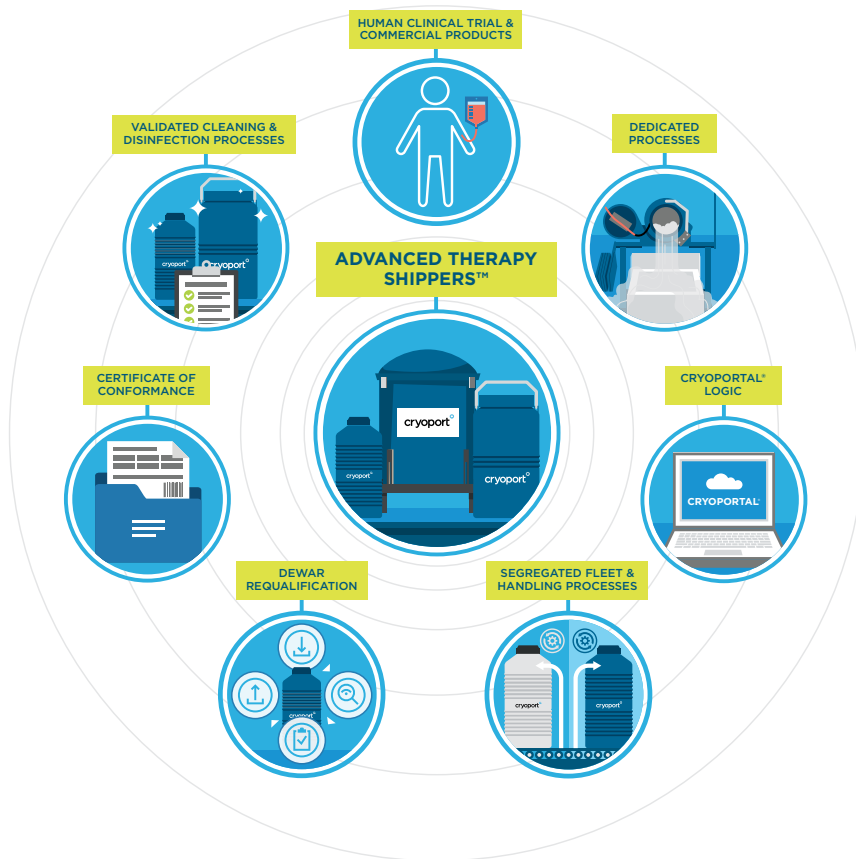
**cryoport**<sup>o</sup>  
SCIENCE. LOGISTICS. CERTAINTY.

U.S. • The Netherlands • Singapore  
info@cryoport.com | +1 949.232.1900 | cryoport.com

© Cryoport Systems, Inc. All rights reserved.

# TRACK YOUR FRAGILE ADVANCED THERAPIES WITH OUR CRYOPORTAL® LOGISTICS MANAGEMENT PLATFORM

As part of our Chain of Compliance™ solution, our ATS shippers integrate into our Cryoport® Logistics Management Platform, which offers complete transparency and unmatched traceability of all equipment, components, and commodities including historical use, performance, handling, cleaning, and disinfection of the equipment.



## Advanced Therapy Shipper™ Product Line:

A first-of-its-kind fleet dedicated exclusively to both clinical and commercial advanced therapy supply chain management

## Human Clinical Trial & Commercial Products:

The only materials our brand new, shipping fleet safeguards and transports to patients in need

## Dedicated Processes:

Specific methods and instructions that ensure all shipper components and materials maintain defined standards to ensure protection from cross-contamination

## Cryoport® Logic:

Logic implemented via the Cryoport® Logistics Management Platform that ensures blue shippers are used exclusively for human advanced therapies

## Segregated Fleet & Handling Processes:

A specialized set of logistic operations that ensures ATS shippers are free of cross-contamination by handling them separately from other fleets

## Dewar Requalification:

A series of procedures that each ATS shipper goes through — including physical suitability, cleanliness, LN2 capacity, and minimum required hold times— before being shipped to its next destination

## Certificate of Conformance:

A guarantee that each shipper is dedicated to advanced cell and gene therapy supply chain management and is certified as human use only throughout its life

## Validated Cleaning & Disinfection Processes:

Sanitation procedures that virtually eliminate the potential risk of cross-contamination of materials and reduce external contaminants by 99.9999%