

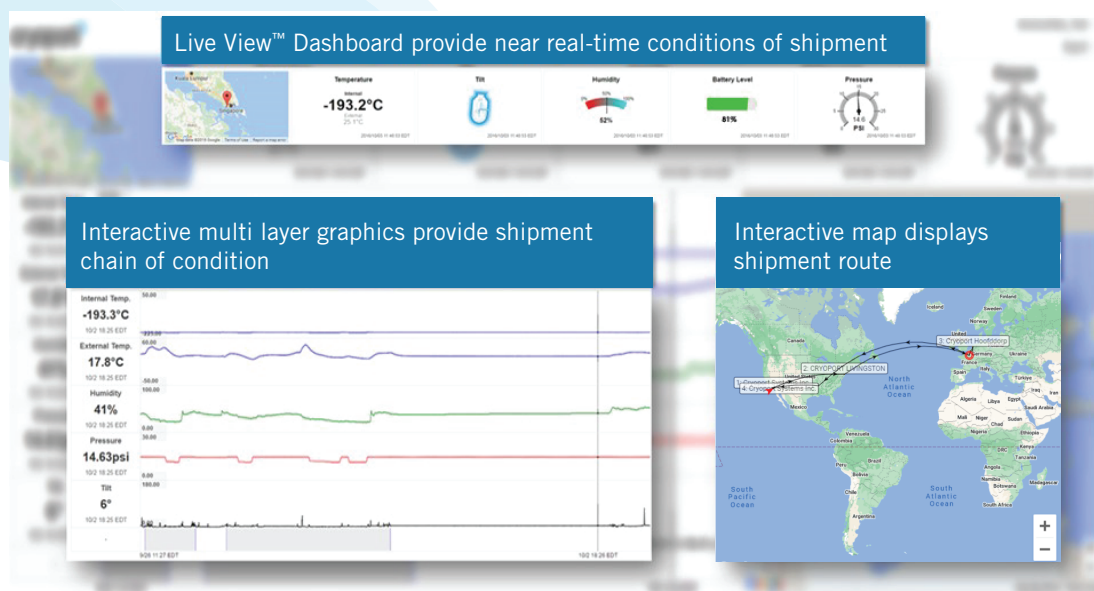
# CRYOPORTAL® 2 LOGISTICS MANAGEMENT SYSTEM

## COMPLETE TRANSPARENCY AND TRACEABILITY

The Cryoport® 2 is Cryoport Systems custom-build logistics management system that provides 24/7/365 access, visibility and traceability to the entire temperature-controlled process from order placement, location and condition during shipment, to return and requalification of each shipper. This proprietary and enhanced Logistics Management System is validated to demonstrate compliance to 21 CFR Part 11 and ISPE GAMP (Good Automated Manufacturing Practices).

The power of the Cryoport® 2 condenses inventory, ordering, tracking, documents and reporting into a single interface. The industry-leading Cryoport® 2 consolidates all logistics, condition monitoring and equipment qualification data for every shipment, and simplifies shipping to streamline communication between Cryoport Systems and our clients, integrated partners, and for internal purposes.

## SMARTPAK II® CONDITION MONITORING DATA VIA LIVE VIEW™



Cryoport Systems' Cryoport® 2 works in conjunction with our Smartpak II® Condition Monitoring System to provide near real-time informatics on every shipment. Through GPS, WiFi, and cellular technologies the Smartpak II® provides Cryoport Systems and clients with the internal temperature, external temperature, orientation/tilt, location, geofencing, humidity, light, pressure and shock of their materials throughout transit.

## ACCOUNT MANAGEMENT

Clients can manage all account information including profiles, user roles, sites, contacts, commodities shipped, freight and broker accounts, and client-required SOPs from their dashboard.

## ORDER CREATION AND MANAGEMENT

Cryoportal® 2 provides clients with the same tools and options utilized by Cryoport Systems' 24/7/365 Logistics Management team to view and manage orders. Cryoportal® 2 allows clients to create an order from scratch or place orders from existing templates. With our scheduling feature, clients can automatically schedule recurring orders from their account. For every order, the client can set shipping exceptions and activate notifications for every shipper within that shipment group.

## ACCOUNT DATA AND INFORMATICS

Clients can view, manage, and export reports based on order history through the Customer Dashboard. This information can include monthly order volumes, average cost per order, on-time delivery statistics, top-ten destination sites, and more.

Cryoportal® 2 captures and stores all data from the Smartpak II® condition monitoring system to provide significant analytics related to lane and equipment performance, freight costs, and historical shipper performance in a single consolidated data stream.

## SHIPMENT TRACKING AND MANAGEMENT

Once an order is submitted, clients can track and manage their shipments in Cryoportal® 2. They can even view the order status of their shipment while in transit. Cryoportal® 2 can provide exception notices, customized alerts, and automated email notifications to the account's contact list.

## DOCUMENTATION AND REPORTS

Clients will have the ability to upload commodity-specific documentation as well as customs documentation to each order.

Cryoportal® 2 can generate Shipper Certification Reports and Temperature Stability Reports. The Shipper Certification Report compiles specific details on each shipment such as order and shipper(s) information. The shipper(s) information includes shipper model and serial number, shipper prior and preparation statistics, and condition monitoring system serial number and statistics. The Temperature Stability Report documents the internal and external temperature of the shipper during transport.

## INTEGRATION

Cryoportal® 2 provides Application Programming Interface (API) integration that allows clients to connect to other software order systems for automated order entry and visibility into the Smartpak II® condition monitoring system information.

When there's no room for error,  
**TRUST CRYOPORT**