



HOB0 Data Logger Station Directions

Confidential & Proprietary

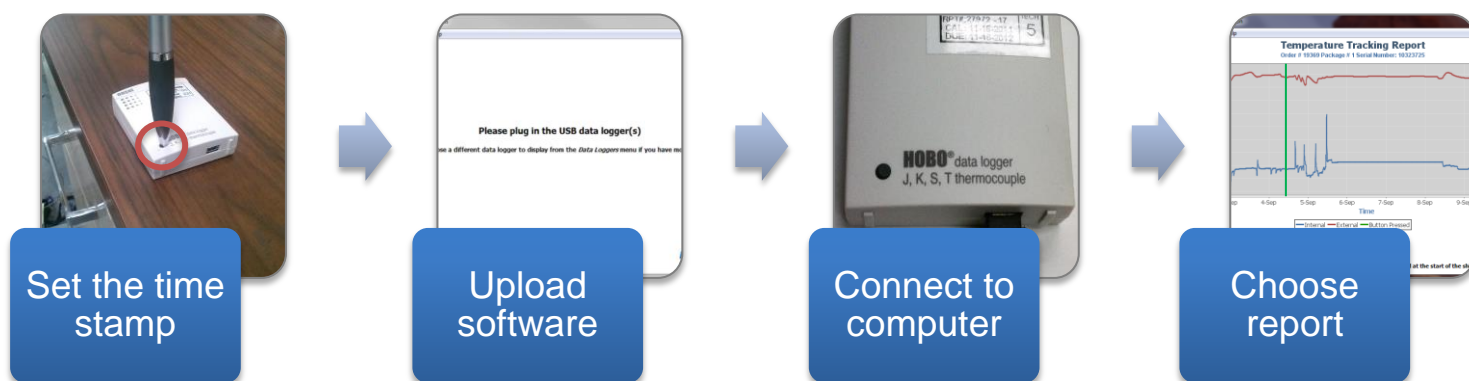
www.cryoport.com +1 949 470 2300

Cryoport Data Station

The Cryoport Data Station allows you to download temperature and condition information about the shipment that is being recorded by the Data Logger.

It works by:

- Setting the data logger to **time stamp** the time when an event occurs that you want to identify, e.g., biomaterials are loaded into the shipper (OPTIONAL STEP)
 - The data logger will start recording information when the data logger is commissioned for order shipment. Pushing the button to set the time stamp adds a green line to the graph to mark the event and is informational only.
- Uploading software to your computer
- Connecting the data logger to your computer



- Choosing how you would like your data displayed



The Cryoport Data Station is ideal for shipments where temperature and condition need to be confirmed before receiving or using biomaterials, to confirm chain of condition and to establish multiple data points in the shipment.

The CryoPort Data Station is an accessory that can be added to any order along with the Data Logger for a fee and a report will be generated at the termination of the shipment. Every report is kept in our CryoPortal along with the data from your shipment.



Cryoport Data Station Directions

Upload Software to Your Computer

The Data Station requires software to read the Data Logger information and translate it into a graphical format. It is available for PC computer only.

The system requirements for the Data Station are:

- Windows Operating System (XP, VISTA, WIN7)
- The data station works with both 32 and 64 bit operating systems.
- Java Runtime Environment 1.6 or higher
- USB 2.0 A-male to Mini-B cable to connect the data logger to the host computer

Software Installation Instructions

1. Click on the link to install the Data Station software
2. Launch the Installer by double clicking on the DataStationInstaller.exe
3. If your system is missing the Java Runtime Environment (JRE) or Microsoft Visual C++ 2010 Redistributable Package, you will be prompted to download and install these components. After you have done so, click next to move to the next step.
4. Click 'Next' to run the Setup Wizard
5. Read and approve the End User License Agreement
6. Select where to install the Data Station
7. Click 'Install'

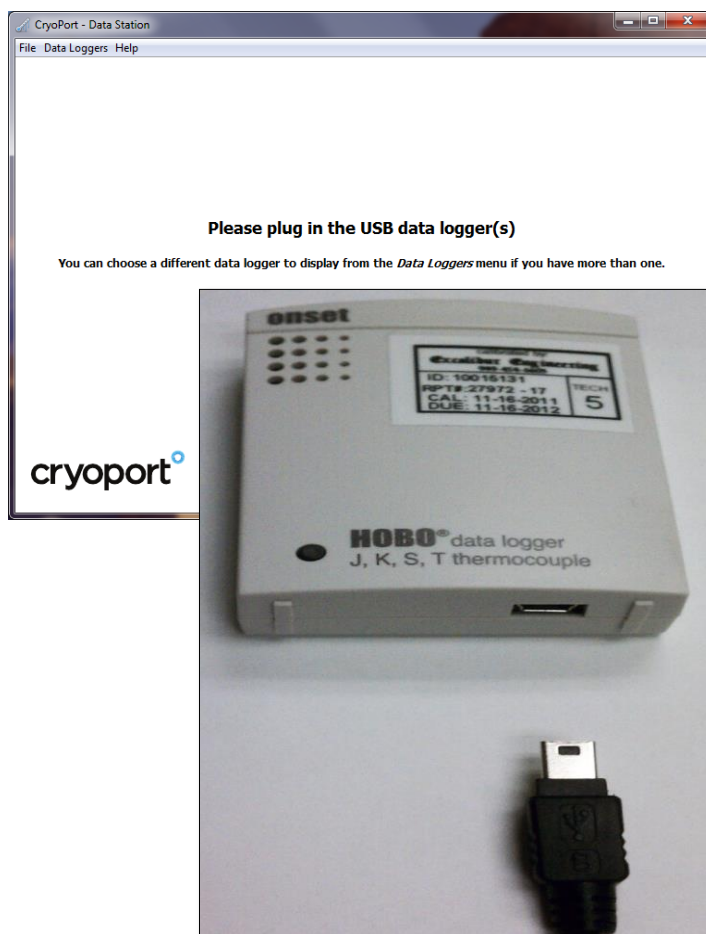
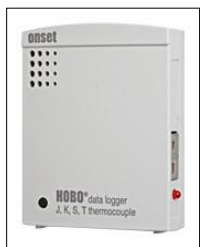
8. Windows may prompt for permissions to install the software. Click yes to install

Start the Data Station Time Stamp Recording (Optional)

1. Load biomaterials (see loading directions for details)
2. Press the Data Logger button for **1 second**
 - a. This means an event occurred that you want to identify, such as the biomaterials were loaded, and puts a green indicator line on the recording to time-stamp the loading step. This is an **optional step**.

Data Station Information Download Instructions

1. Start by opening the Data Station program on your computer. When you open the Cryoport Data Station you will see this screen.



2. At this point you can plug in the USB Data Logger that came in your Cryoport Shipment. You will need a Mini USB cable to connect the data logger to your computer

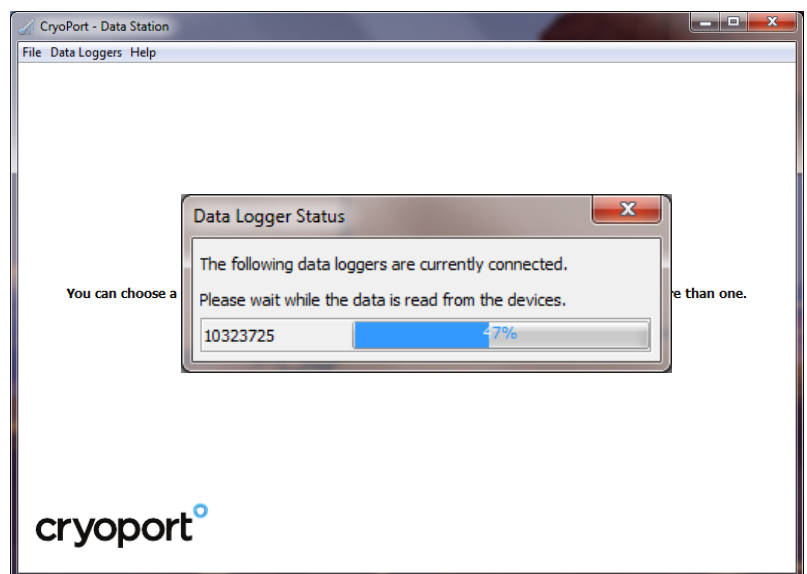


3. Once you plug in the data logger, the Data Station will detect the device and start to load the data.

4. Once the data is loaded, a chart will be displayed showing the temperature during the duration of the shipment.

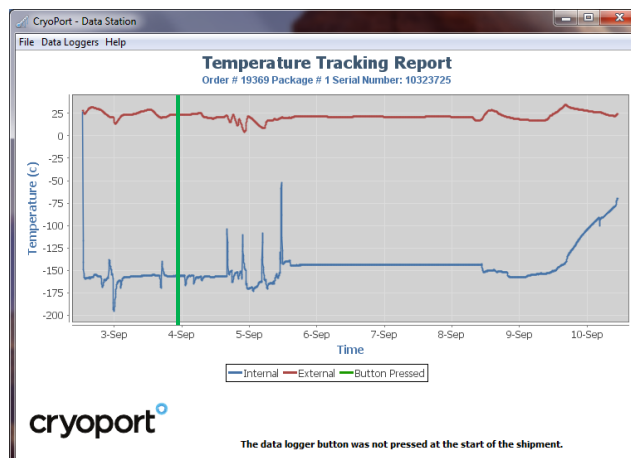
5. When the samples were loaded into the Shipper, the user should

have pressed the data logger button for 1 second (if you are using this option),

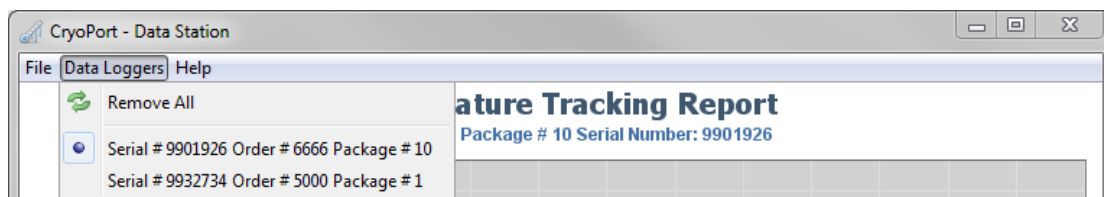


indicating to you that the samples were loaded. This is shown as a green vertical line when the button was pressed. If the button was pressed multiple times for any reason, each instance will be shown as a green line on the graph.

6. If the user did not press the button, this will be noted on the graph (no green indicator line). You can find the approximate time the samples were loaded by referring to the tracking information to determine when the shipment was picked up by the shipping courier.



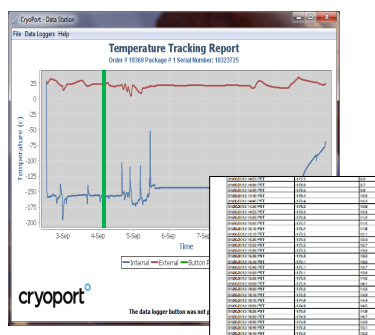
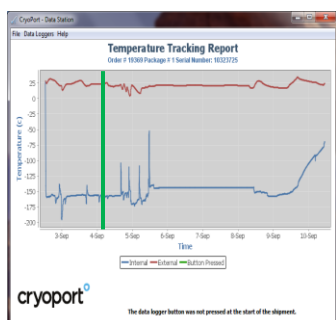
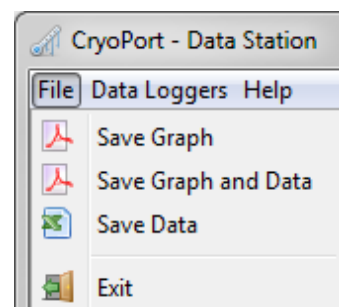
7. If your shipment contains



multiple data loggers, you can simultaneously connect each one to your computer. Each time a new data logger is connected, it will show the temperature chart for that data logger. You can switch between data loggers using the Data Loggers Menu, and then select the data logger you want to view.

8. To Save the Information:

- a. Go to the File menu. You will see 3 options:
- b. Save Graph: This will save a PDF file containing just the graph.
- c. Save Graph & Data: This will save a PDF file containing the graph and a table of all the underlying temperature data.
- d. Save Data: This will save a table of the underlying temperature data in a Comma Separated Value (CSV) file format. This can be opened using Microsoft Excel.



01-0000012 14:25 PST	-175.5	9.6
01-0000012 14:30 PST	-176.0	9.7
01-0000012 14:35 PST	-176.4	9.8
01-0000012 14:40 PST	-176.4	10.0
01-0000012 14:45 PST	-176.4	10.3
01-0000012 14:50 PST	-176.2	10.6
01-0000012 14:55 PST	-176.0	10.9
01-0000012 15:00 PST	-175.9	11.2
01-0000012 15:05 PST	-175.7	11.5
01-0000012 15:10 PST	-175.7	11.8
01-0000012 15:15 PST	-175.5	12.1
01-0000012 15:20 PST	-175.5	12.4
01-0000012 15:25 PST	-175.5	12.7
01-0000012 15:30 PST	-175.5	13.0
01-0000012 15:35 PST	-175.9	13.2
01-0000012 15:40 PST	-175.1	13.5
01-0000012 15:45 PST	-175.1	13.7
01-0000012 15:50 PST	-175.0	14.0
01-0000012 15:55 PST	-175.0	14.1
01-0000012 16:00 PST	-175.0	14.2
01-0000012 16:05 PST	-175.0	14.3
01-0000012 16:10 PST	-174.8	14.4
01-0000012 16:15 PST	-174.8	14.5
01-0000012 16:20 PST	-175.0	14.6
01-0000012 16:25 PST	-174.8	14.7
01-0000012 16:30 PST	-174.8	14.9
01-0000012 16:40 PST	-175.0	15.1
01-0000012 16:45 PST	-175.0	15.2